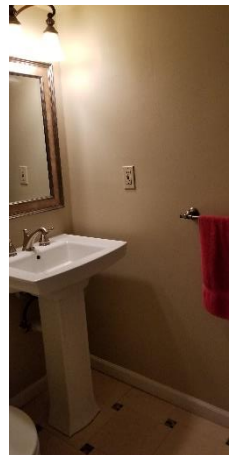


**7352 Elm Court, Whispering Woods - Tri-Level Condo for Sale - \$228,900**  
**End-Unit, Large Open Space Layout, Two Covered Balconies, Private Entrance**

**Call Tom 732-997-6629 to see the condo**

- Tri-level End unit Condo
- Open space design
- 2 Bedrooms
- 1 ½ Bathrooms
- Approx. 1131 sq. ft.
- Forced Air Heat
- New 2018 Air Conditioning
- New 2018 Furnace
- New 2017 Water Heater
- New 2017 Washer & Dryer
- Assigned Parking
- Plenty of Guest Parking
- Eat-in Kitchen
- Vaulted Ceilings
- Updated Kitchen and Baths
- Hardwood Floors
- Carpeting in Bedrooms
- Private Covered Entry
- Club House, Pool, Gym
- Tennis Courts



*Actual Layout of 7352 Elm Court. it is a mirror image of another Willow Model layout*



**Call Tom to see the condo 732-997-6629**  
 Disclosure: The owner is a Licensed Real Estate Agent

**7352 Elm Court, Monmouth Junction, NJ 08852**  
[www.southbrunswick.net/7352elmcourt.pdf](http://www.southbrunswick.net/7352elmcourt.pdf)